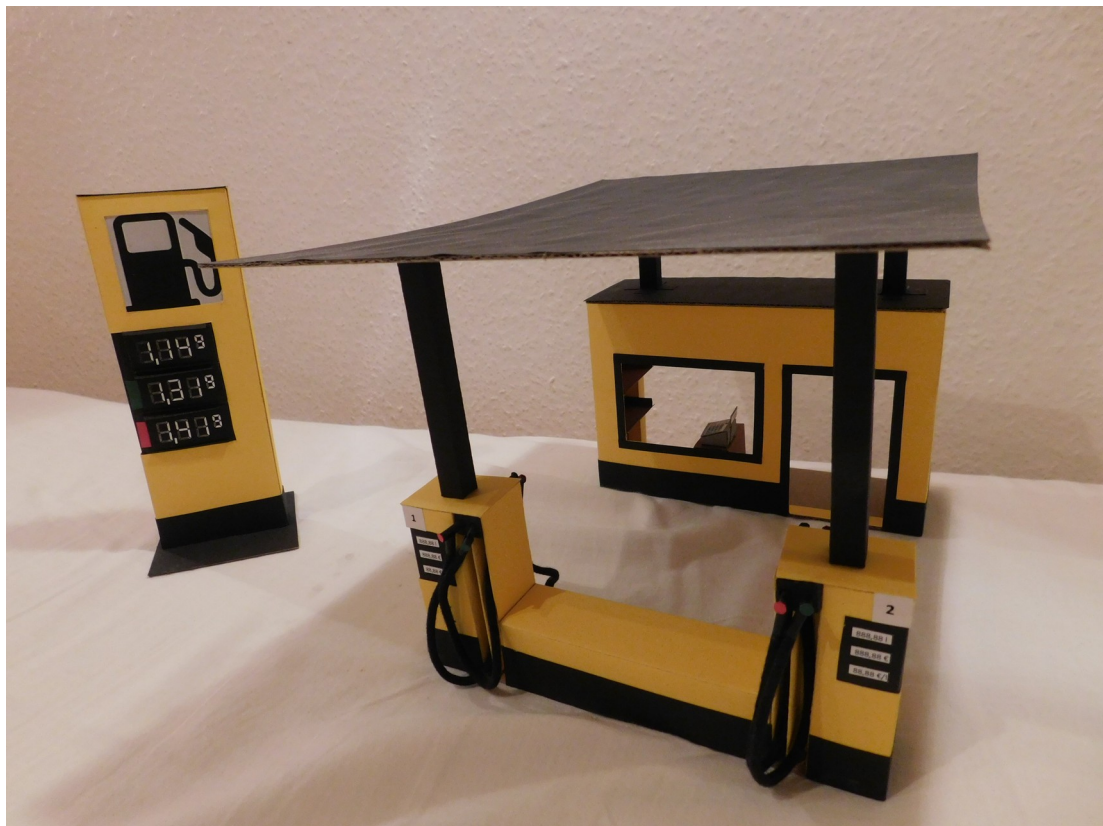


Bastelbogen

Tankstelle

von Frank Nolting



Liebe Bastelfreunde,

für den Bau dieser Tankstelle empfehle ich den Druck dieses Bastelbogens auf **Tonpapier oder Fotokarton** mit der **Stärke 300 g/m²**.

Dieses Dokument enthält 2 Versionen, eine zum Ausdrucken mit einem Farbdrucker und die andere in schwarz-weiß zum Selberanmalen oder zum Drucken auf farbigem Tonpapier.

Wer die farbige Version möchte, der druckt bitte die Seiten 4 bis 10.

Wer die schwarz-weiß Version will, der druckt bitte die Seiten 11 bis 17.

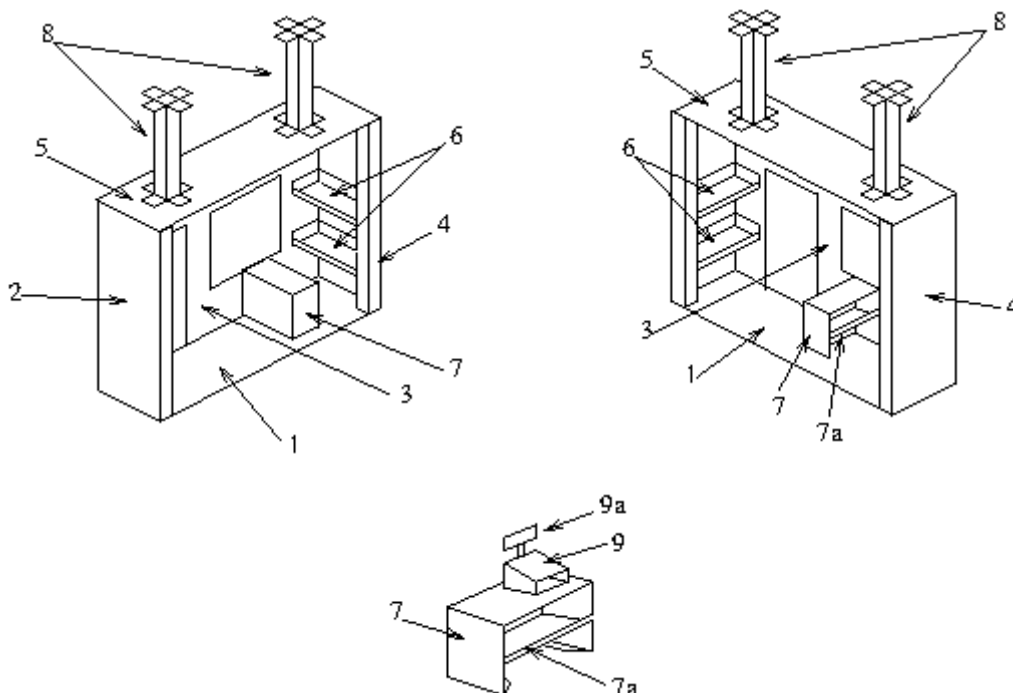
Zusätzlich benötigt ihr noch

- einen DIN-A4 großen schwarzen Karton für das Dach der Tankstelle. Das kann zum Beispiel die Rückseite eines Malblocks sein, den ihr schwarz anmalt. Ich möchte nicht eure Druckerschwärze dafür vergeuden.
- einen dicken Wollfaden oder alte dicke Schnürsenkel für die Tankschläuche.
8 x 16 cm Länge.

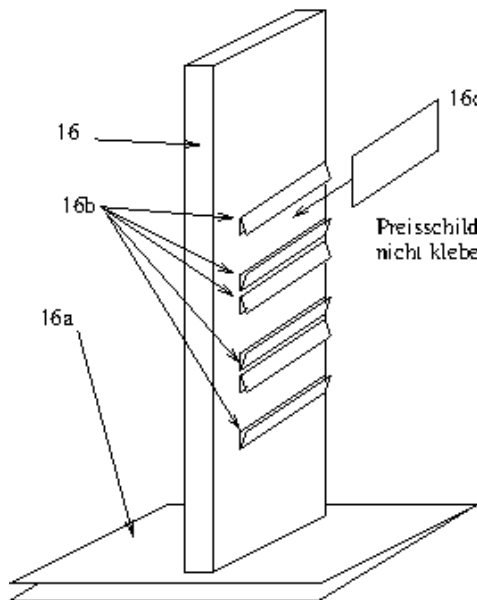
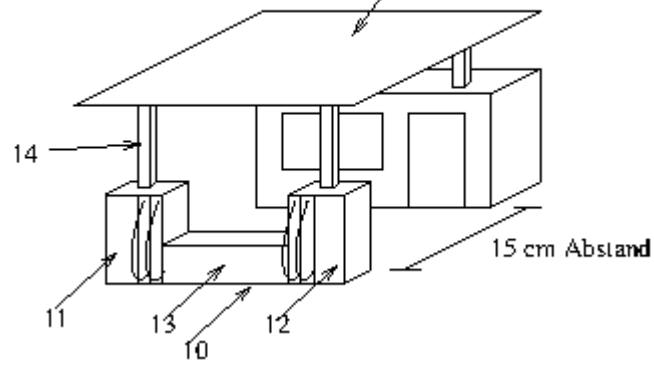
Kleiner Tip: Wenn ihr die Knickkanten vorher mit einem stumpfen Messer leicht anritzt, dann lassen sich die Kanten besser und gerade abknicken.

Ihr dürft diesen Bastelbogen im PDF Format gerne an andere weitergeben und kopieren aber nicht kommerziell verwerten.

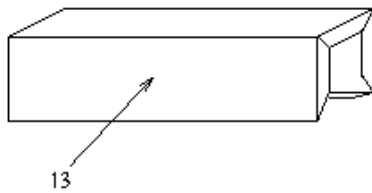
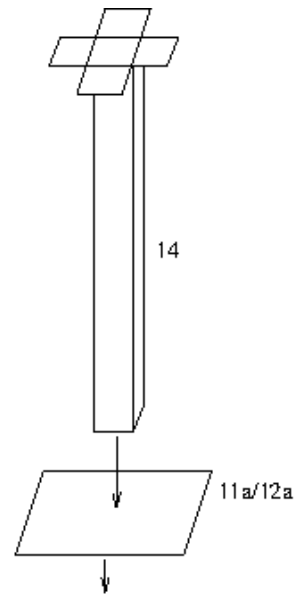
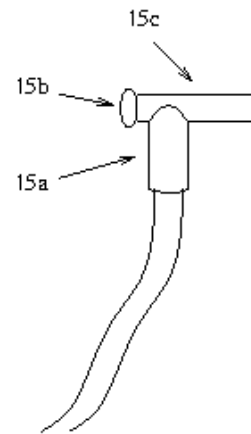
Viel Spaß beim Basteln,
Euer Frank



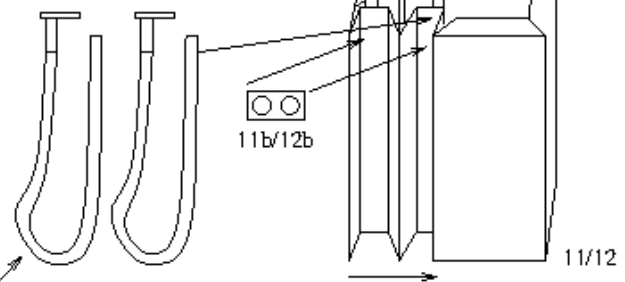
schwarze DJN-A4 Pappe als Dach

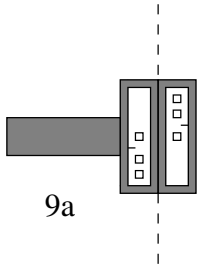
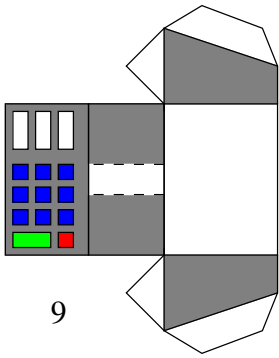


Preisschilder nur einschieben,
nicht kleben!

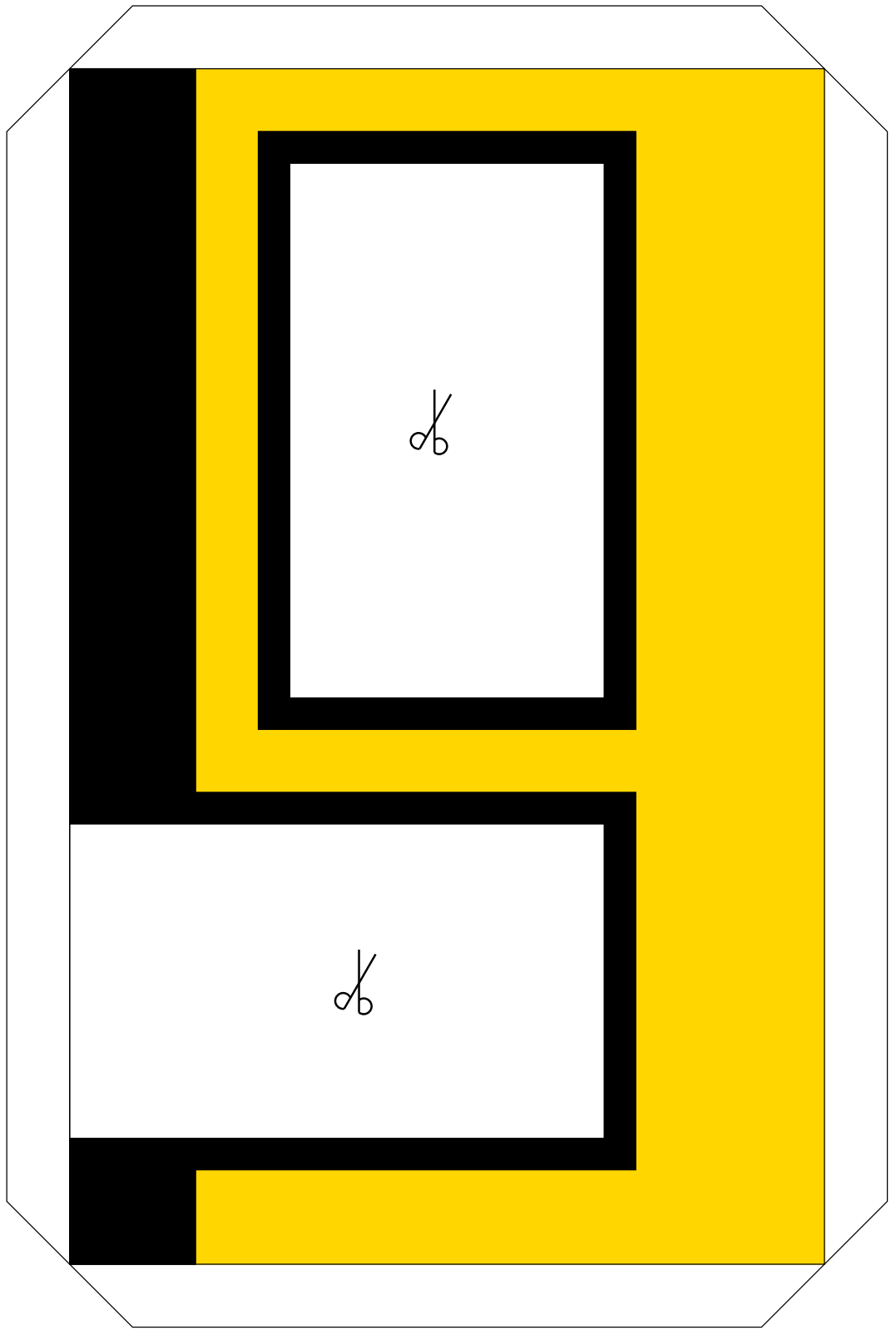


16 cm langer Tankschlauch (z.B. Wollfaden)

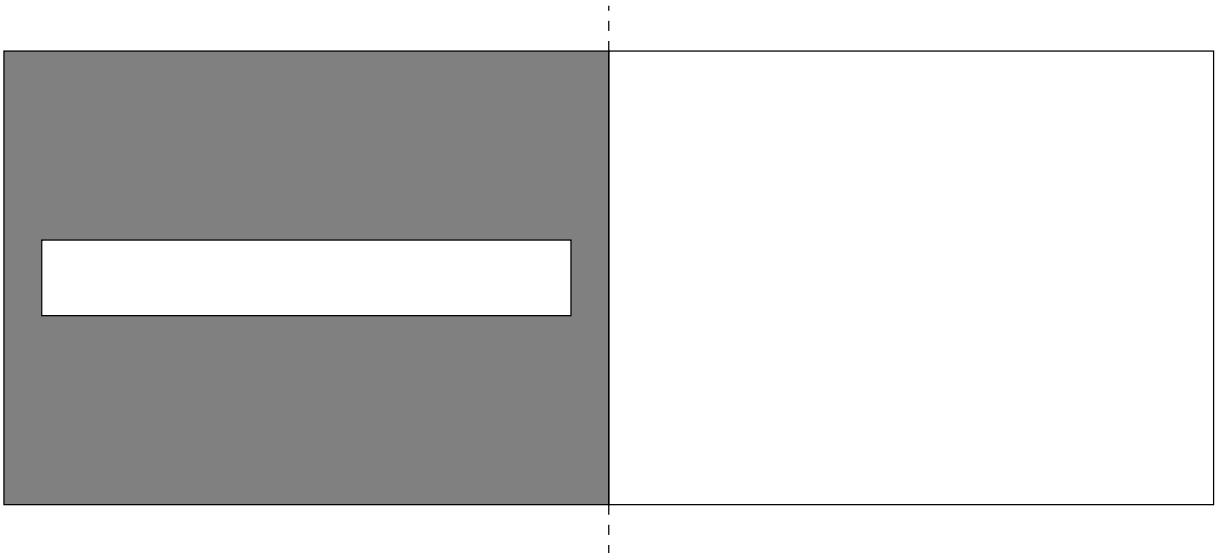




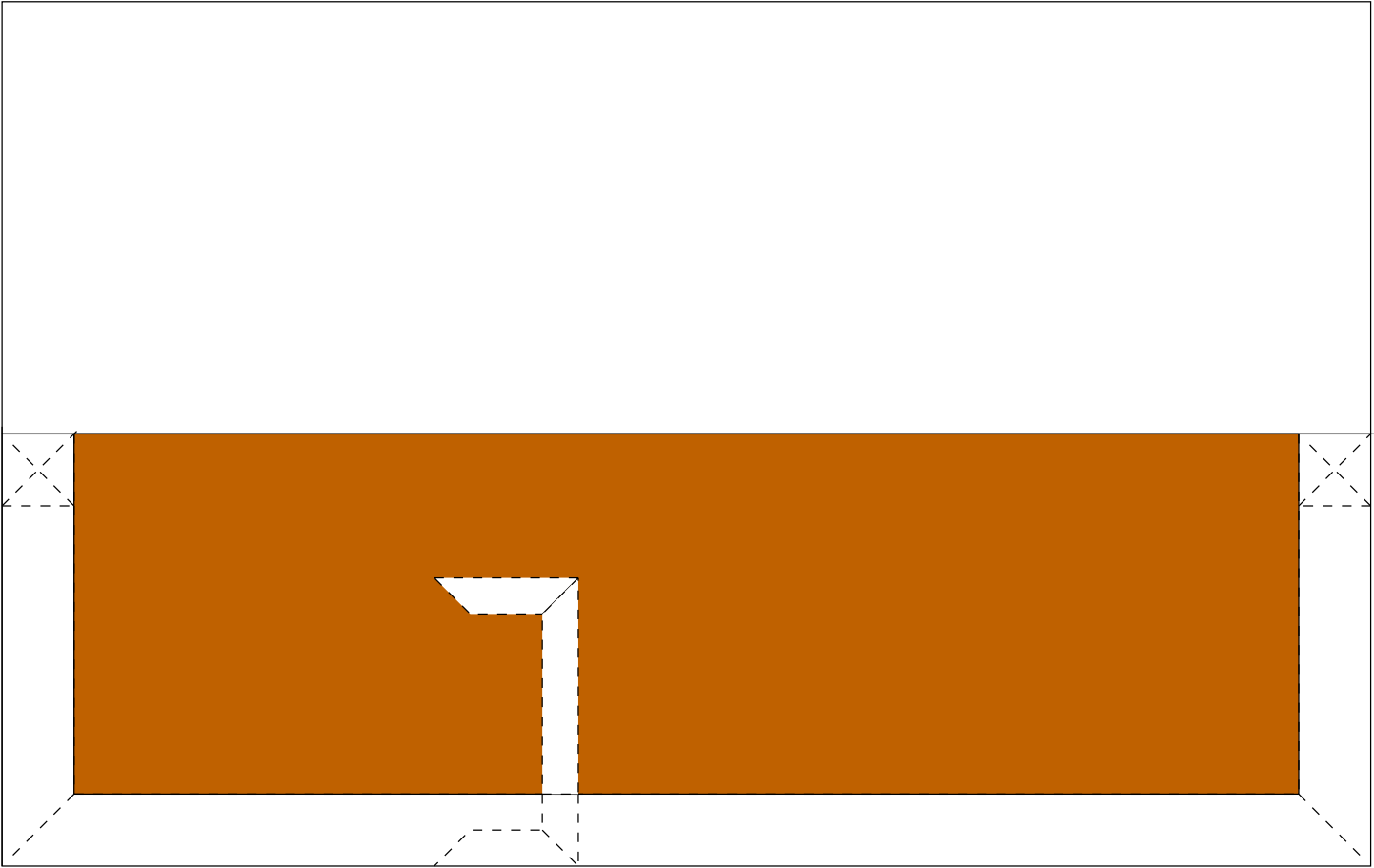
3



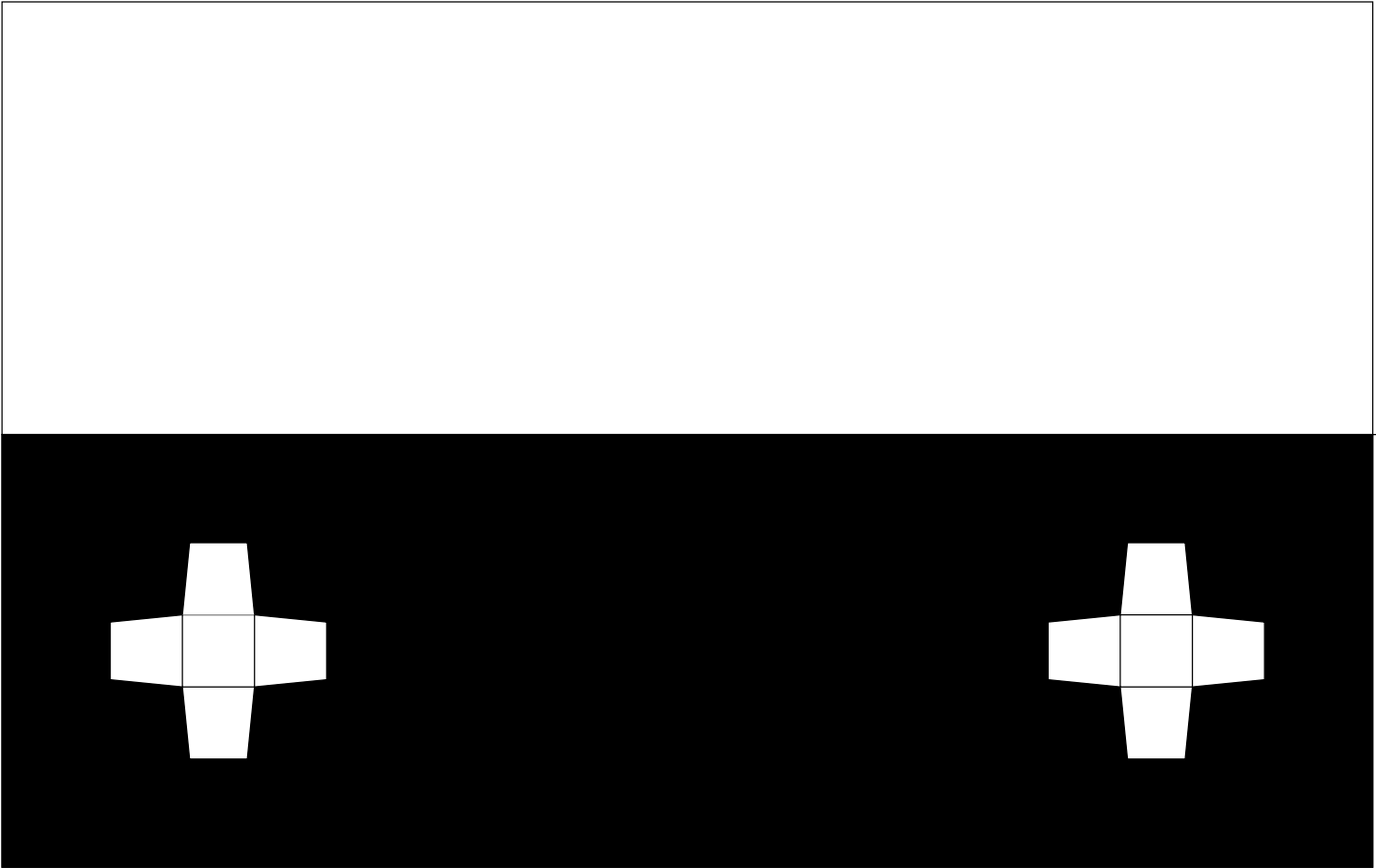
16a



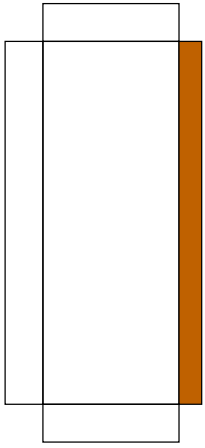




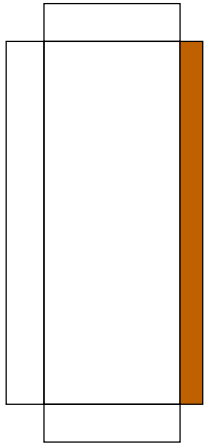
1



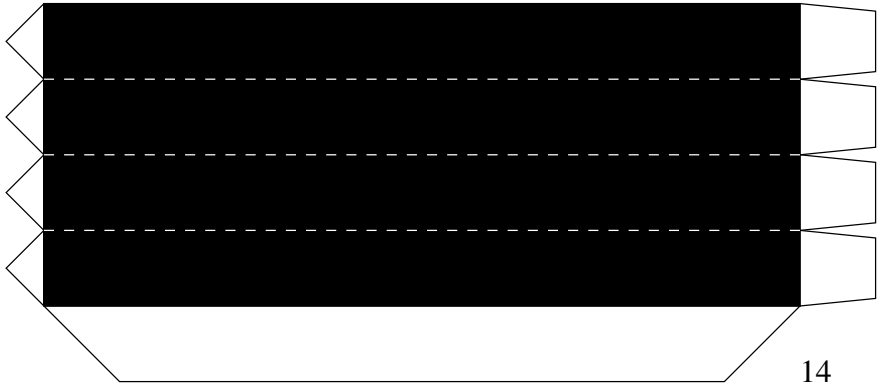
5



6

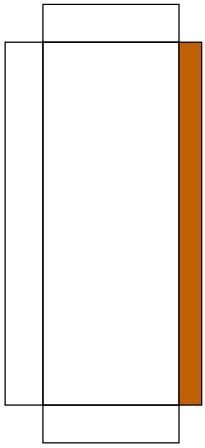


6

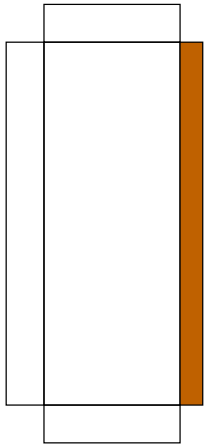


14

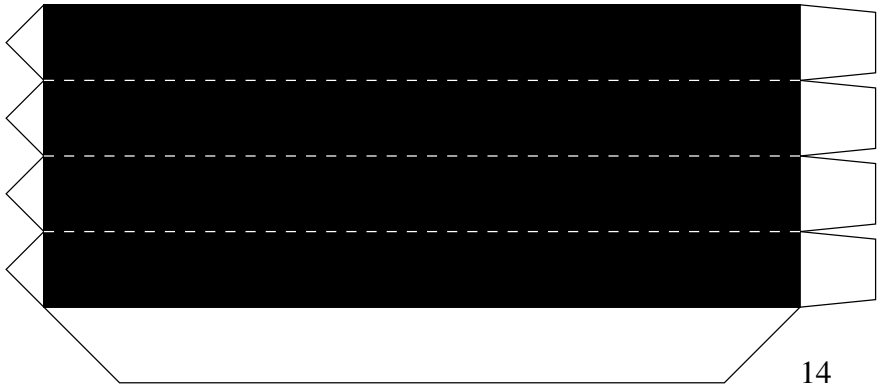
← Unten



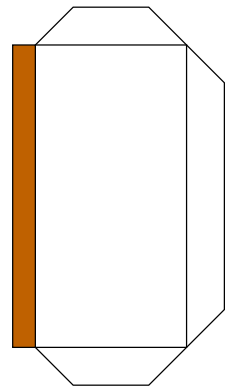
6



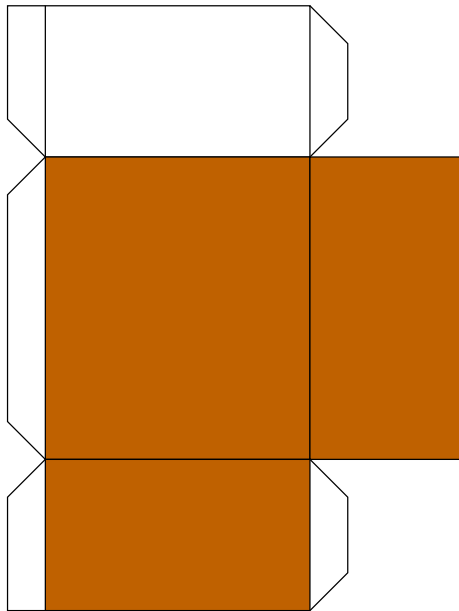
6



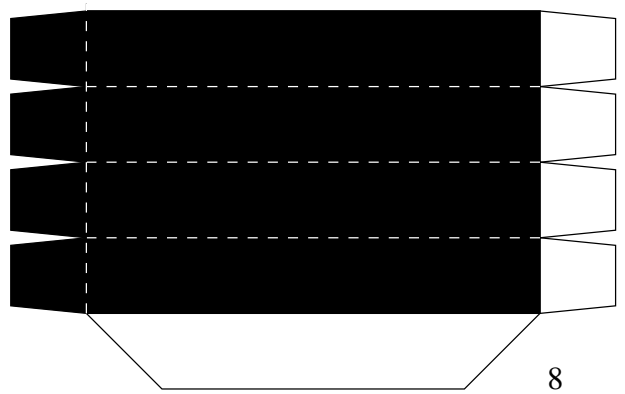
14



7a

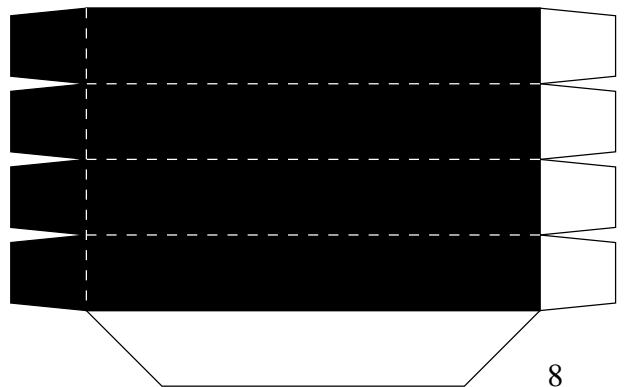


7

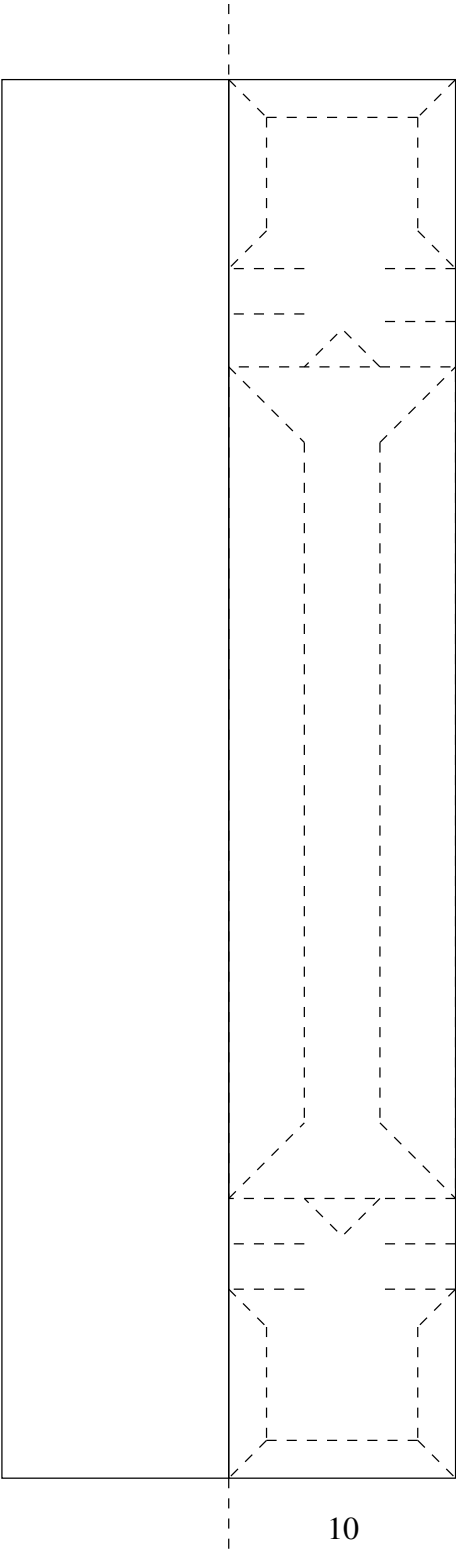


8

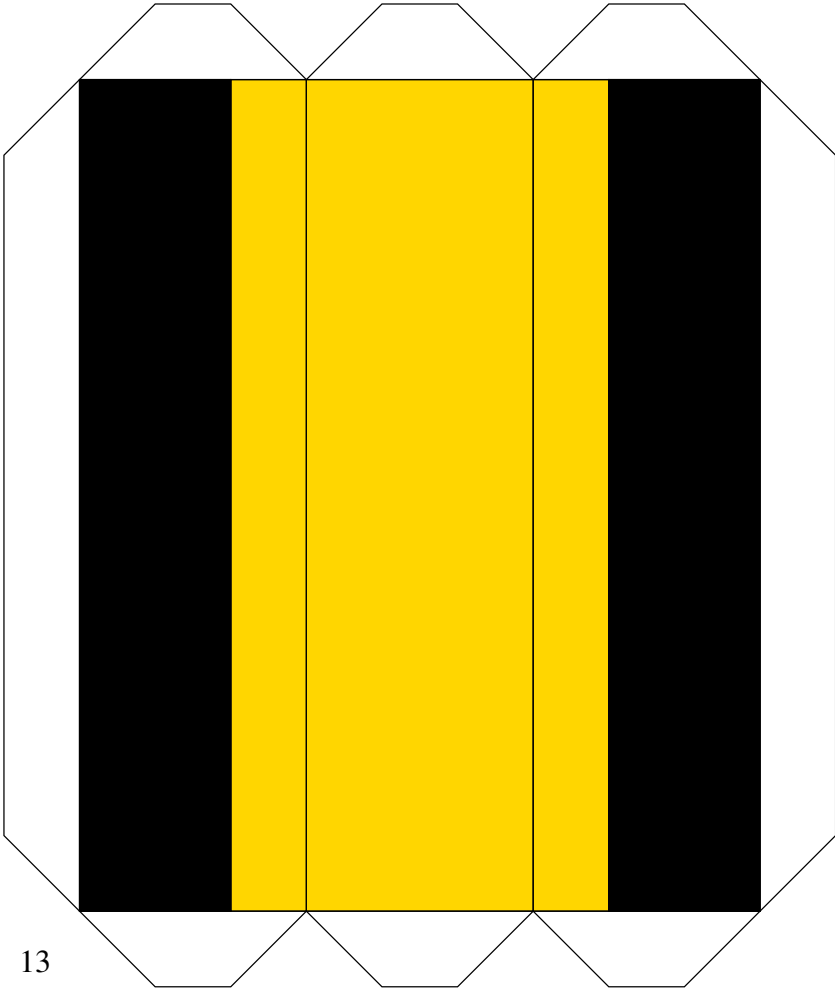
← Unten



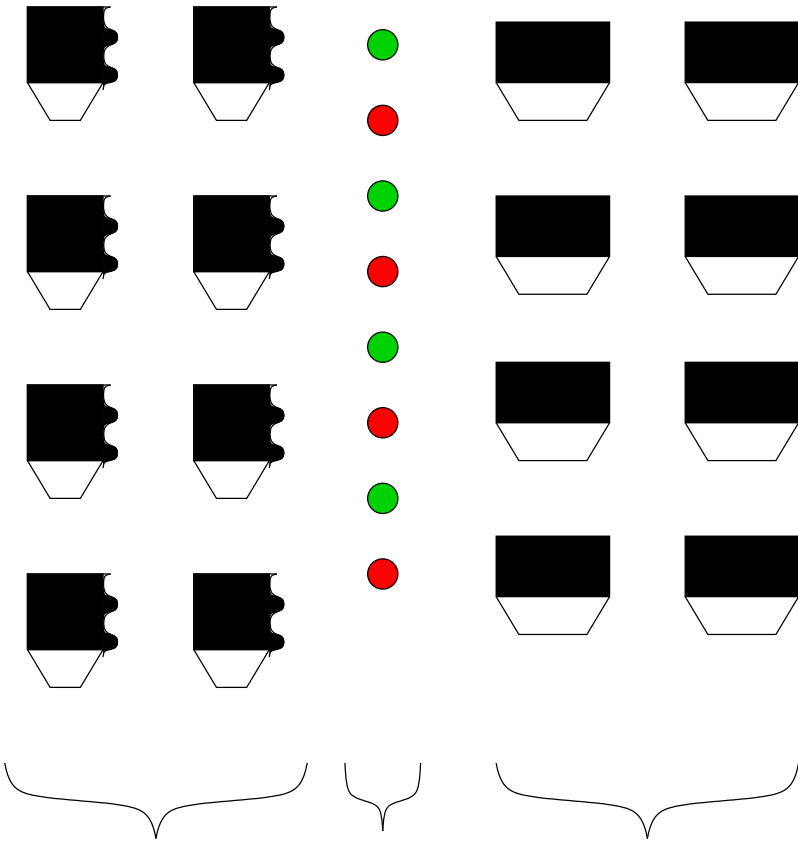
8



10



13

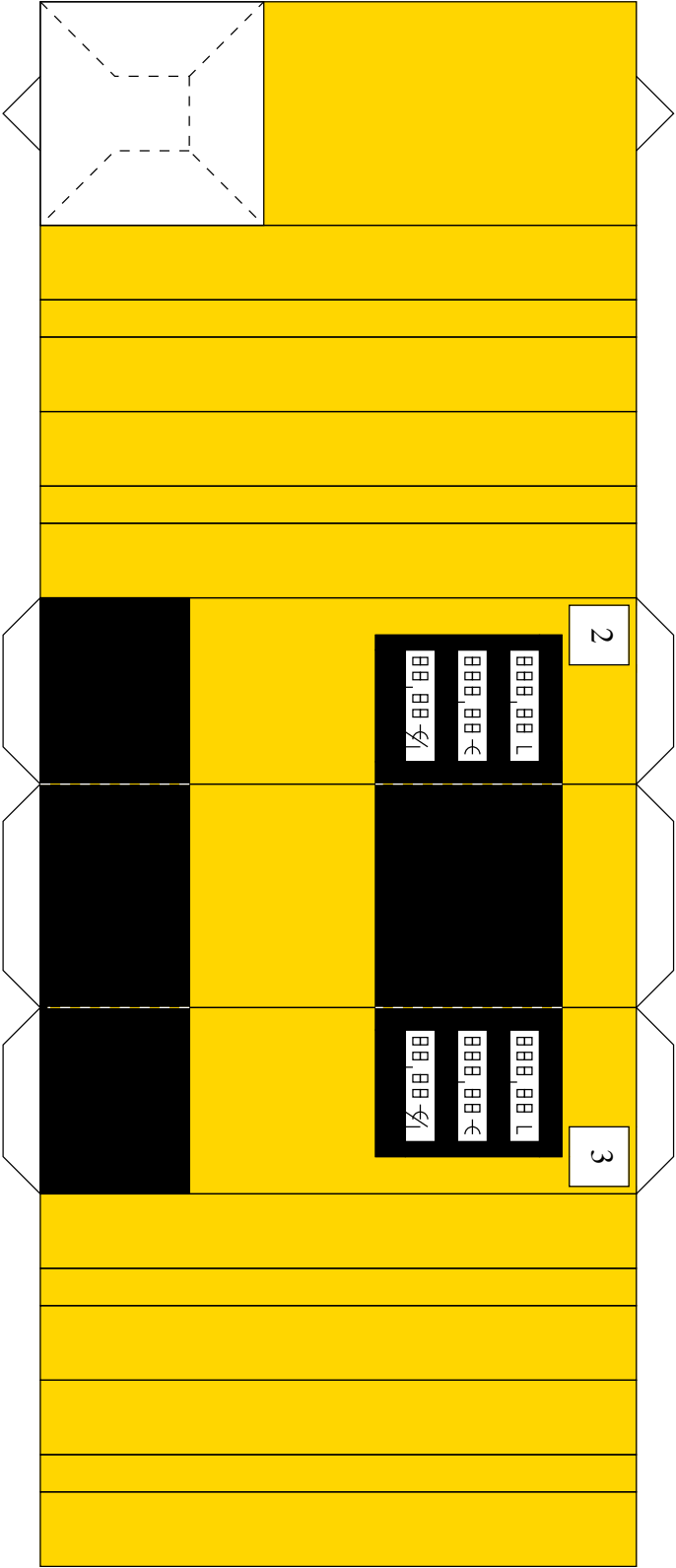


15a

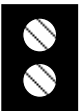
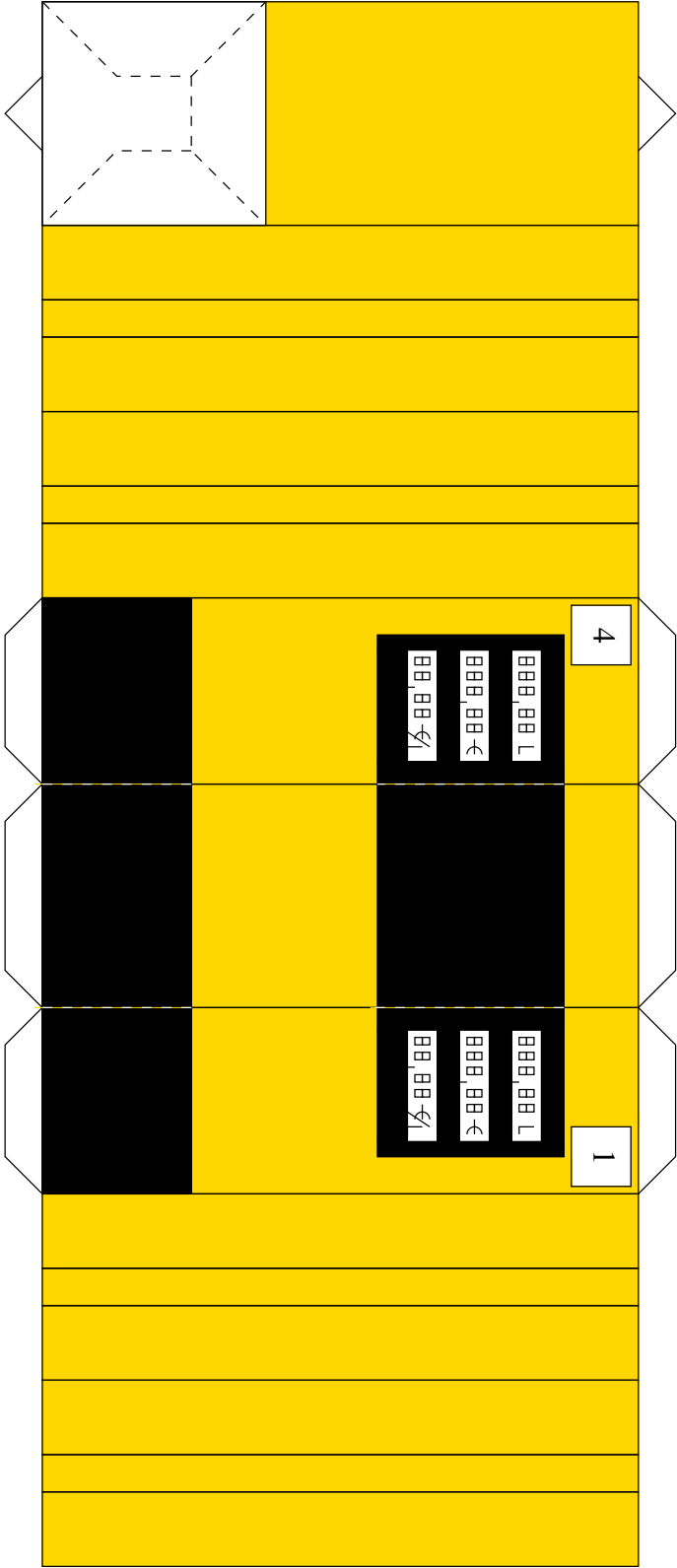
15b

15c

12



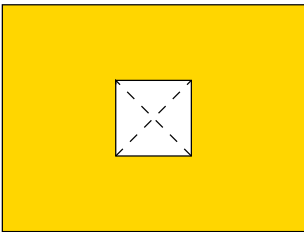
11



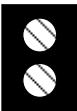
12b



12b



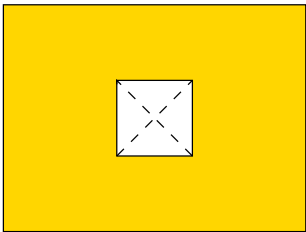
12a



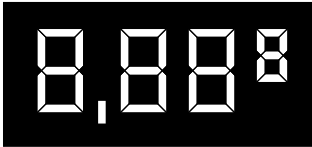
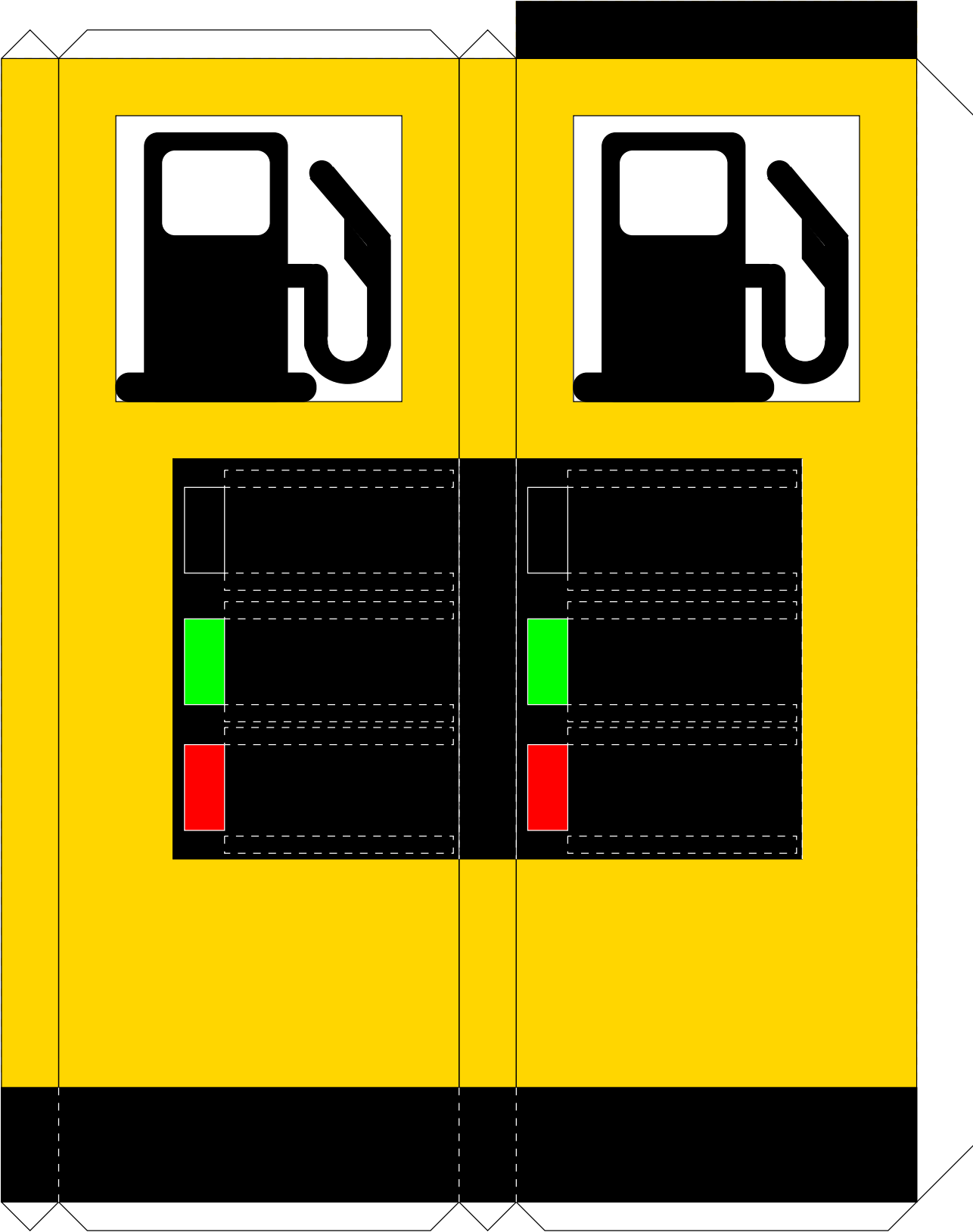
11b

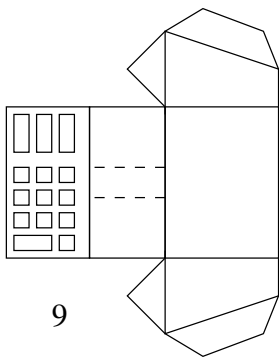


11b

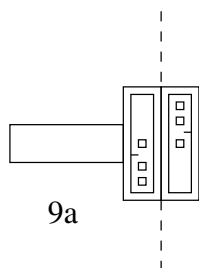


11a





9



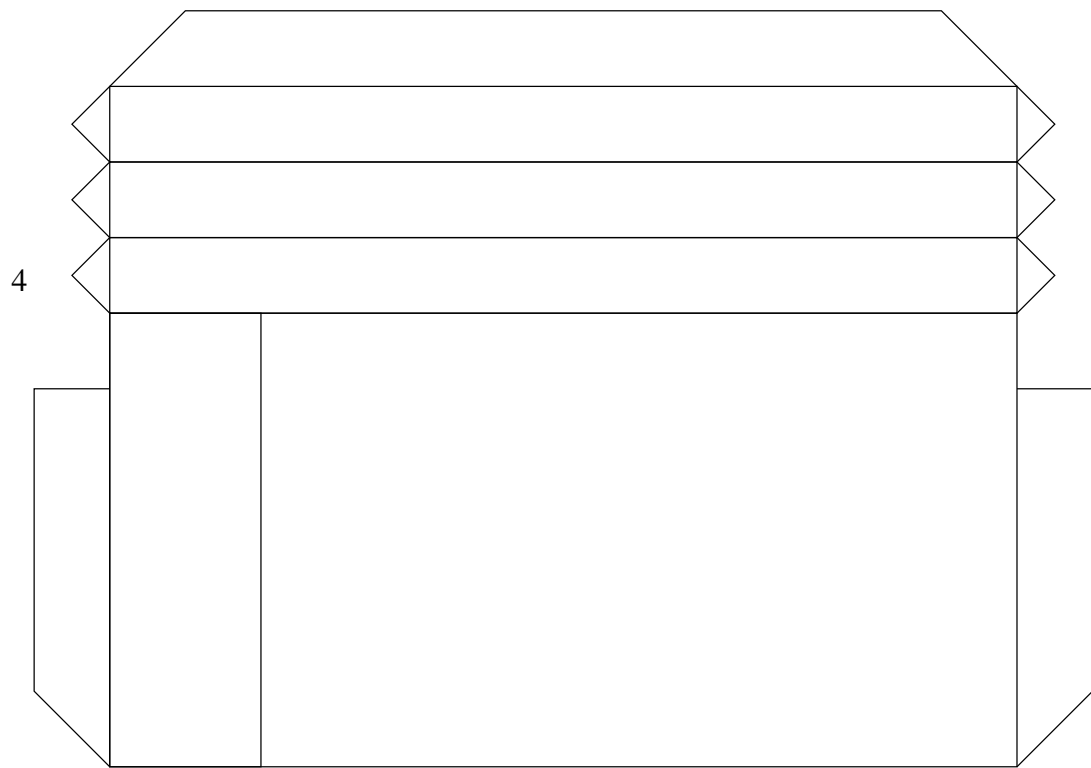
9a

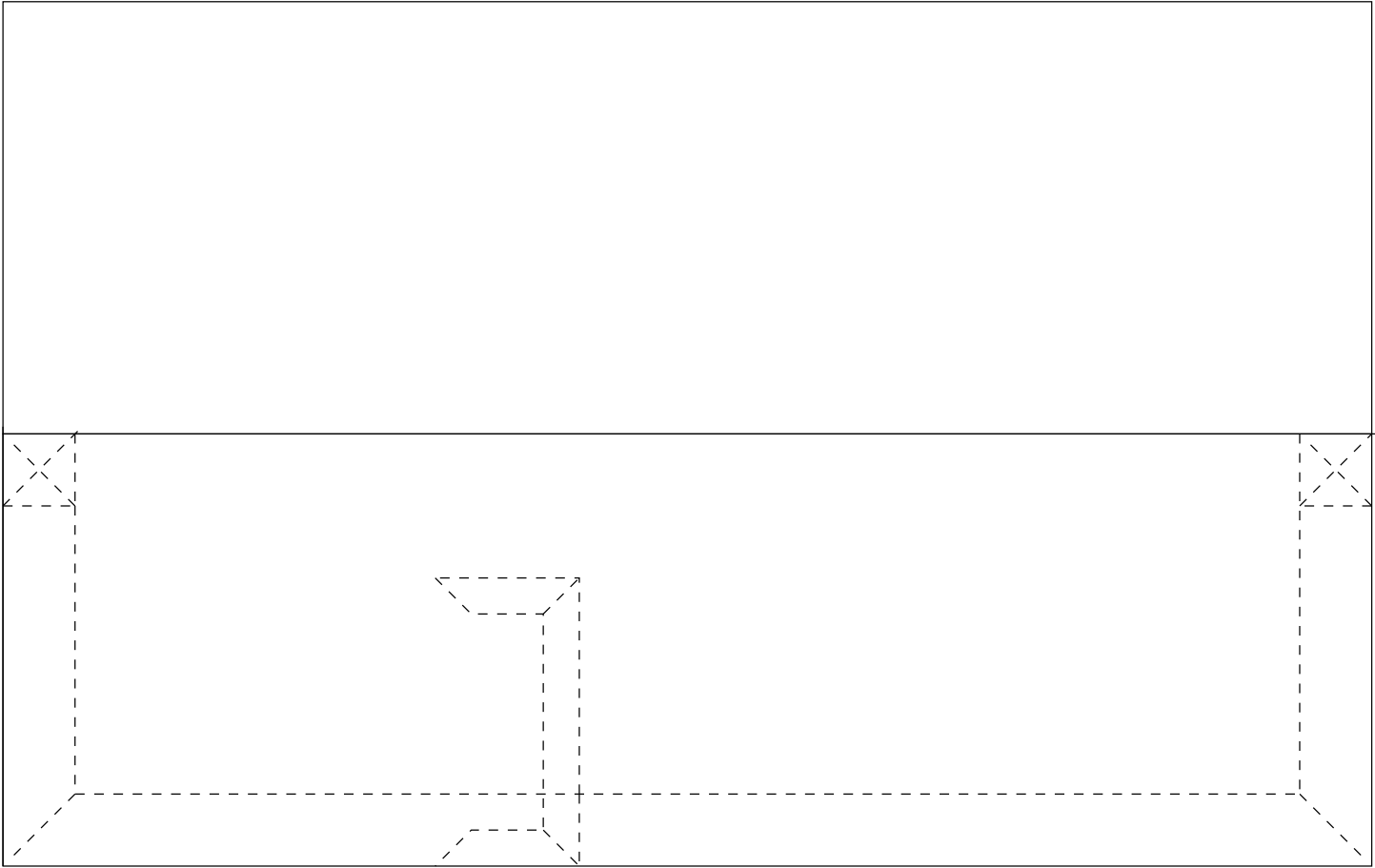
3



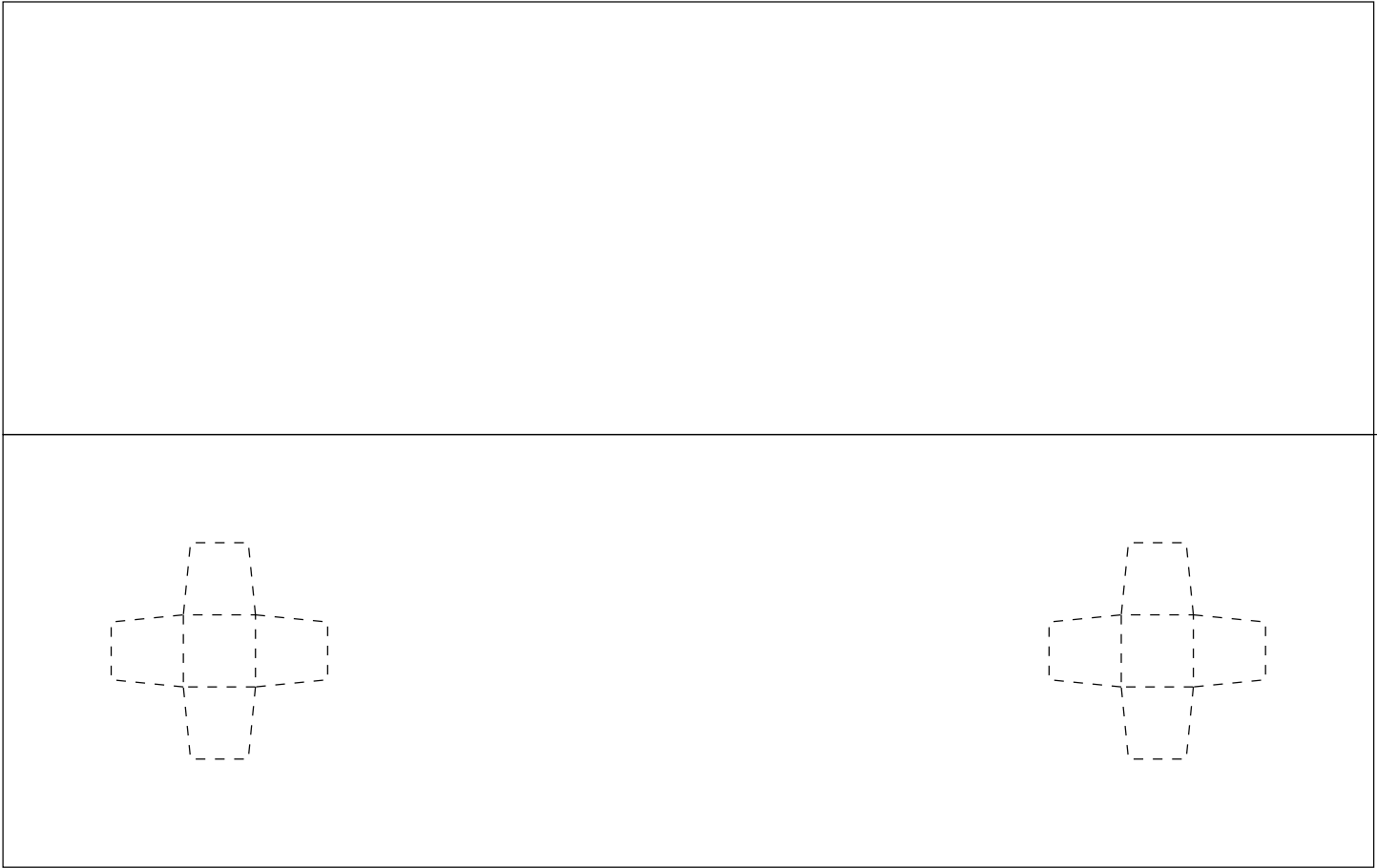
16a



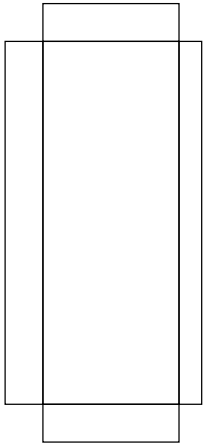




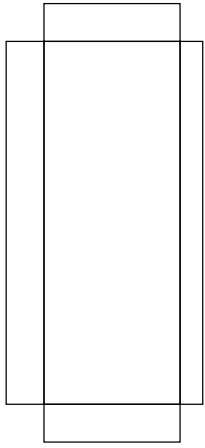
1



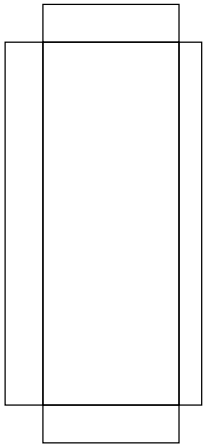
5



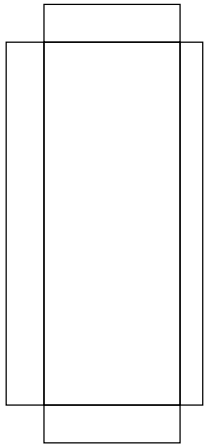
6



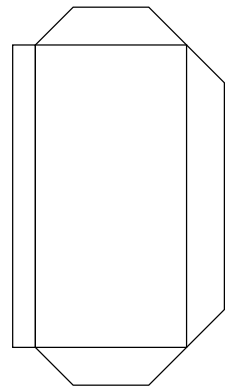
6



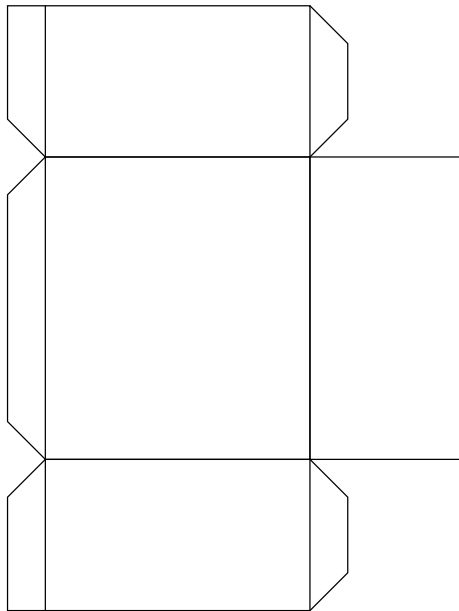
6



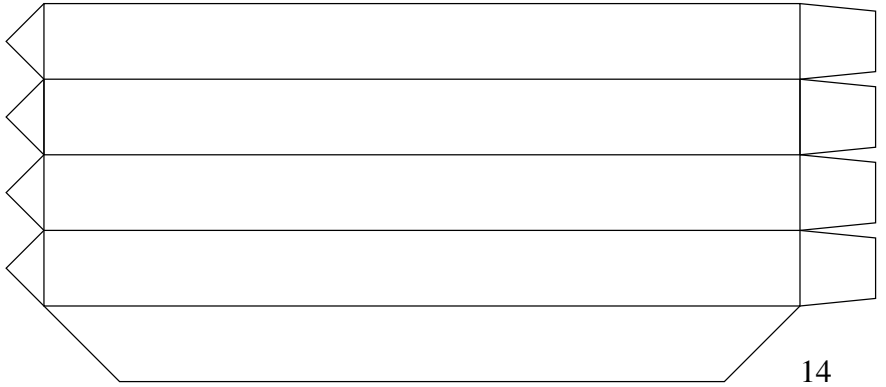
6



7a

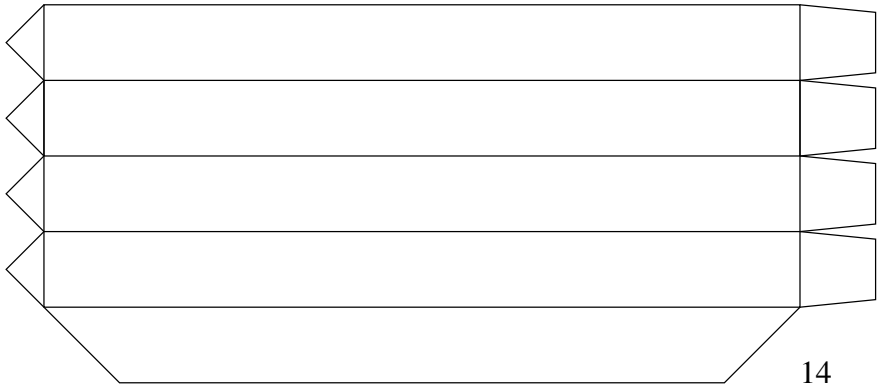


7

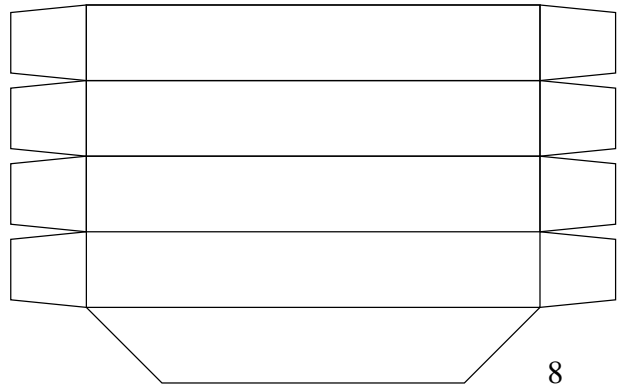


14

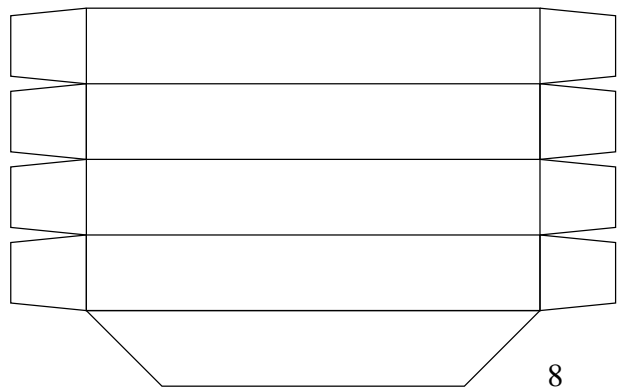
← Unten



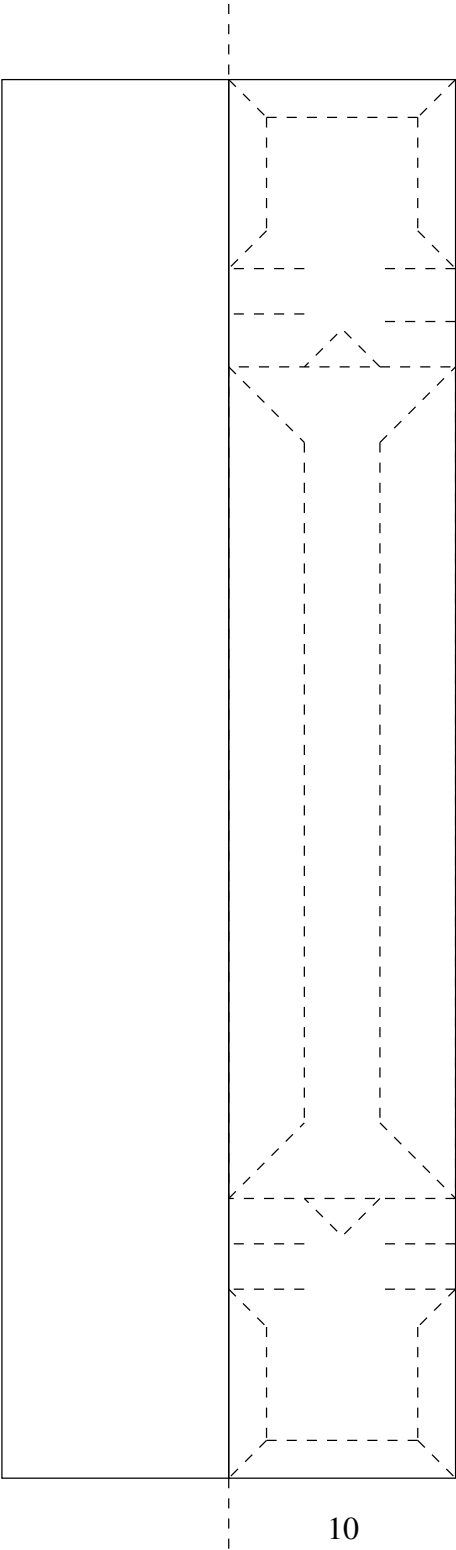
14



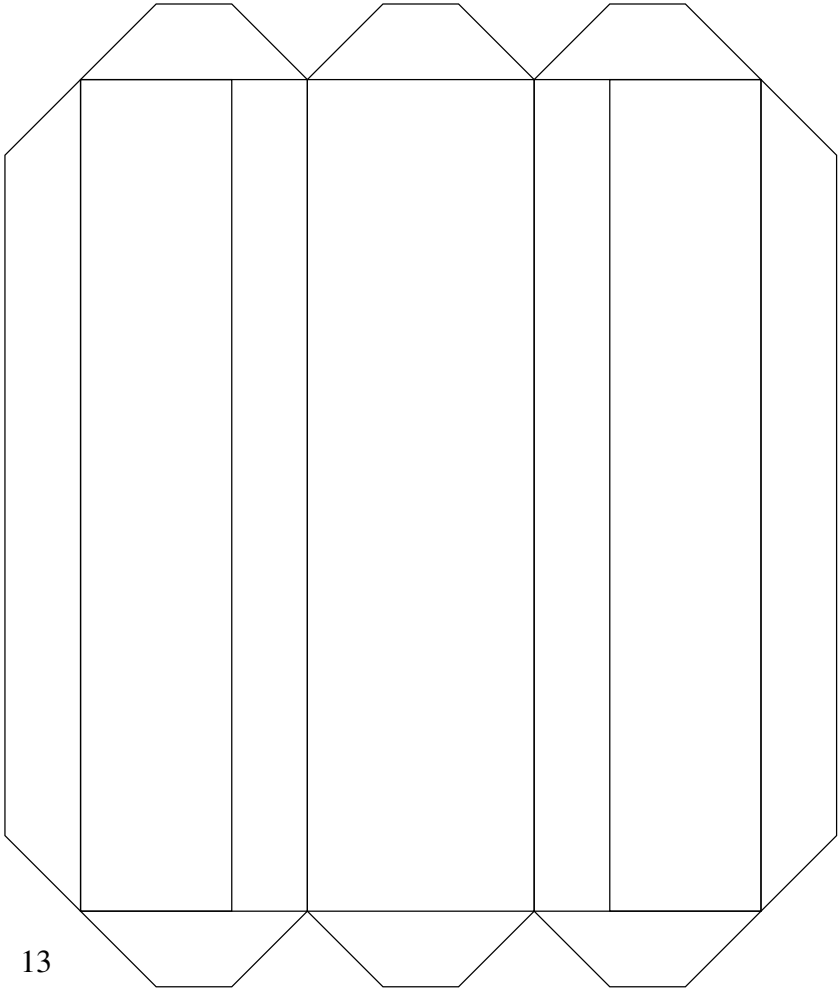
8



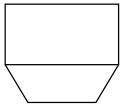
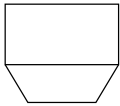
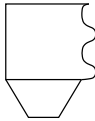
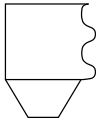
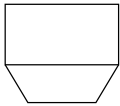
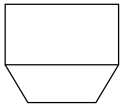
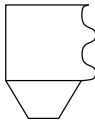
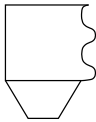
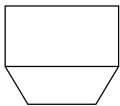
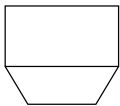
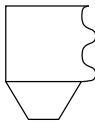
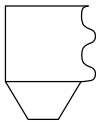
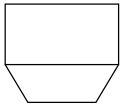
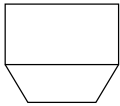
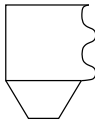
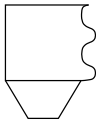
8



10



13



15a

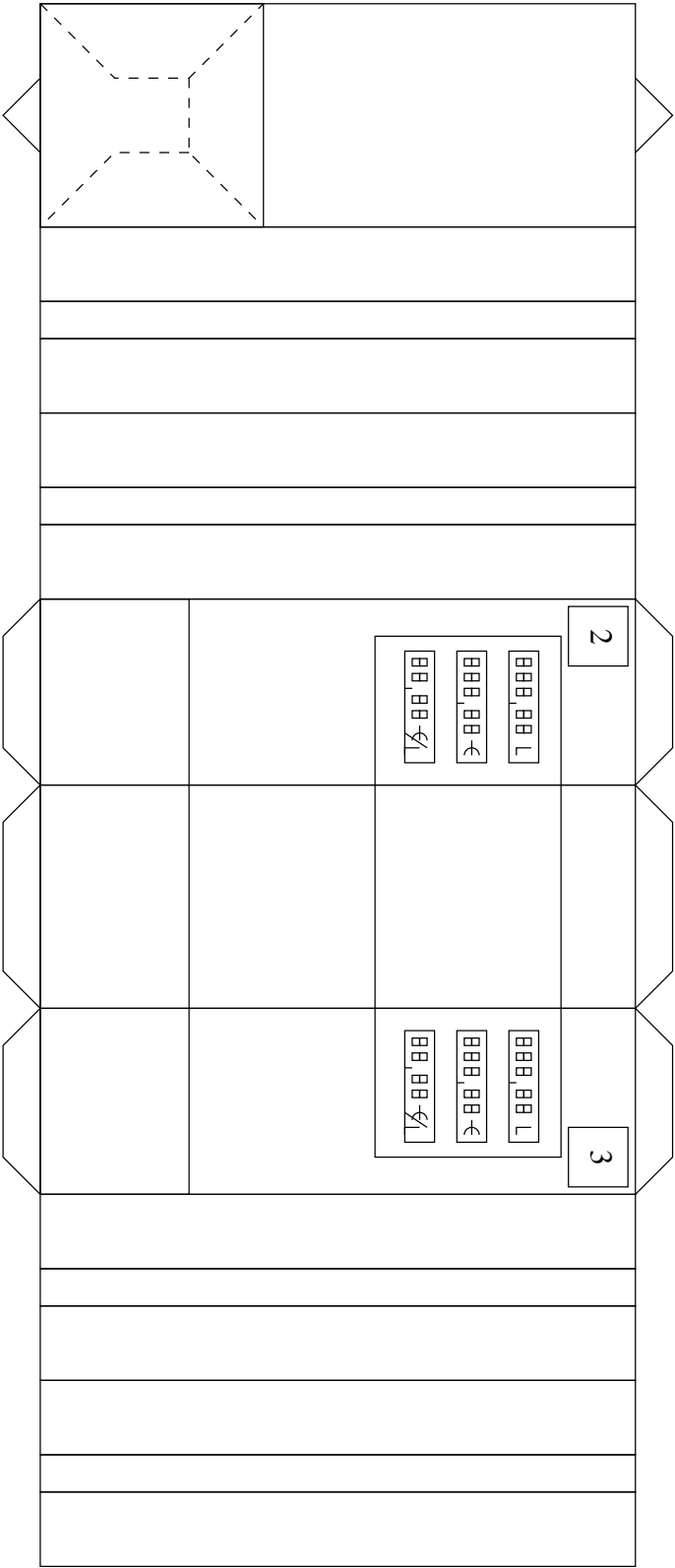


15b

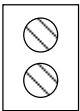
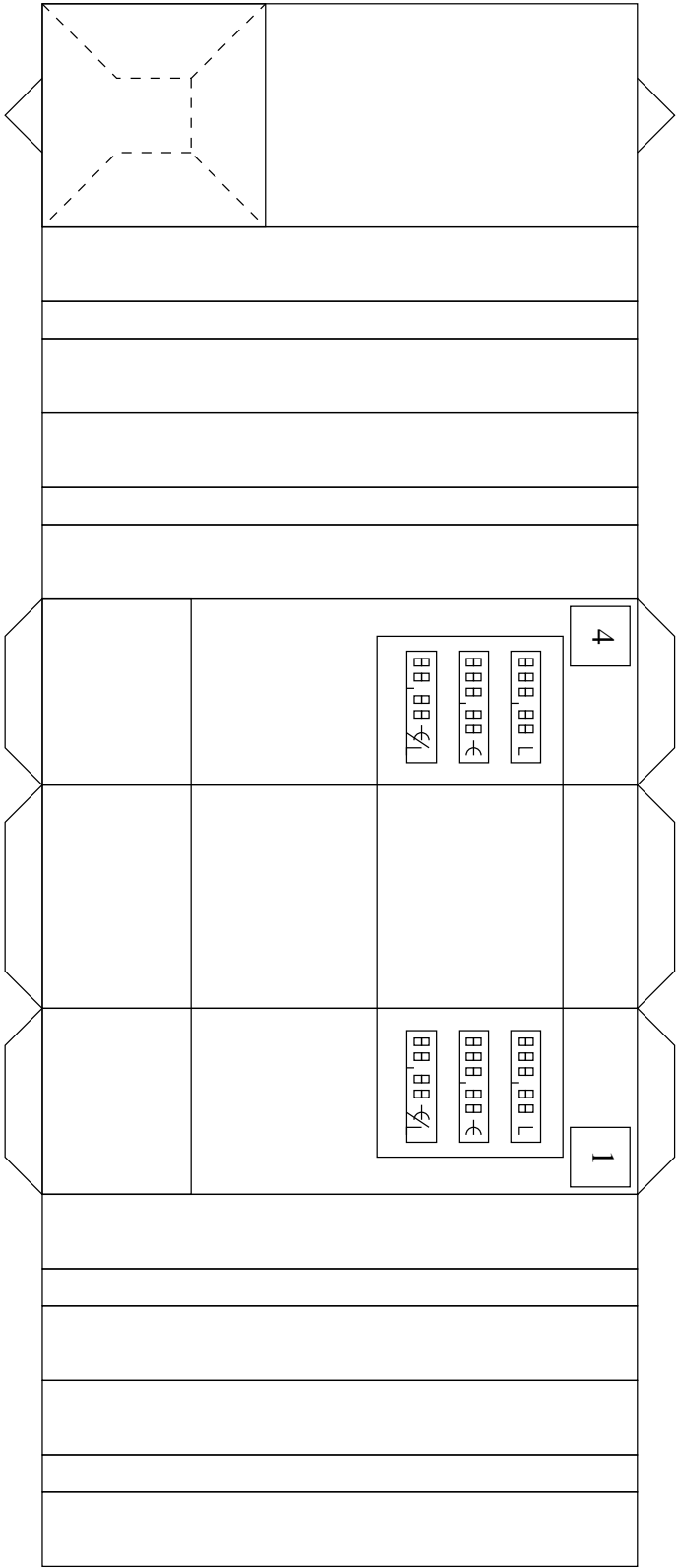


15c

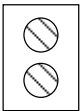
12



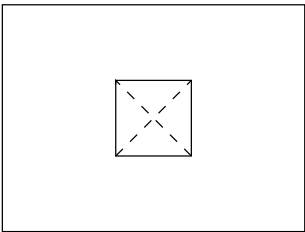
11



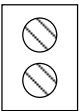
12b



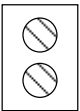
12b



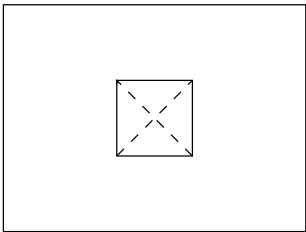
12a



11b



11b



11a

